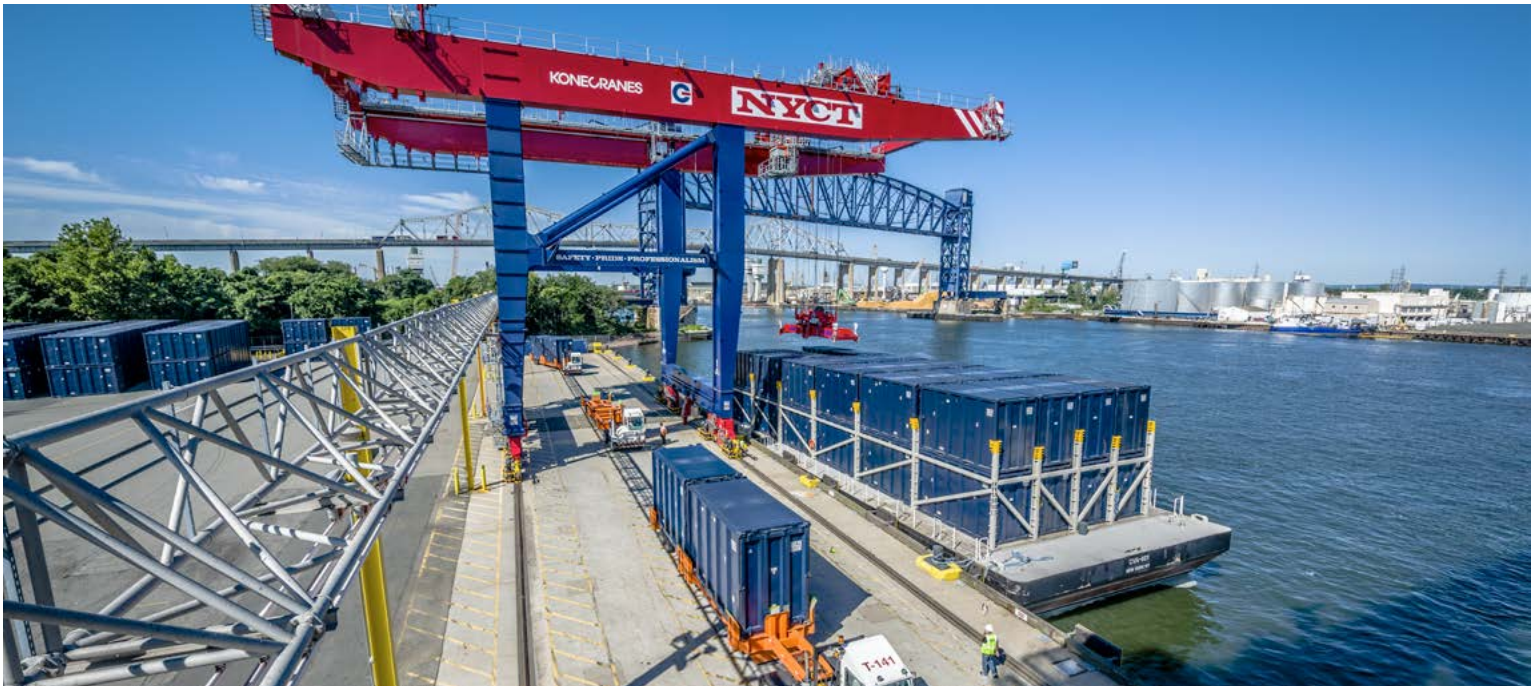


INDUSTRIAL CRANES
NUCLEAR CRANES
CONTAINER HANDLING
SHIPYARD CRANES
HEAVY-DUTY LIFT TRUCKS
SERVICE
MACHINE TOOL SERVICE

KONECRANES[®]
Lifting Businesses[™]

RAIL MOUNTED GANTRY CRANES

REFERENCES



Rail Mounted Gantry Cranes

References

Year	Customer	Type	No.	Country	Gantry Capacity	Span
2016	Haifa Port Company	RMG	3	Israel	40t	34
2016	Burlington Northern Santa Fe, Gardner Terminal	RMG	3	USA	40LT	42,67/31,24
2015	SFT, Pacific National	RMG	2	Australia	41t	32
2015	MFT, Pacific National	RMG	2	Australia	41t	32
2014	New York Container Terminal	RMG	2	USA	50LT	15,2
2012-2013	Terminal Catalunya S.A.	RMG	2	Spain	40t	41,445
2012	Transnet Ltd	RMG	3	South Africa	41t	22,5
2011	ECT Delta	RMG	1	Netherlands	40t	32
2010-2011	Haifa Port Company	RMG	12	Israel	40t	34
2008	Muuga Container Terminal	RMG	1	Estonia	40t	22
2008	BNSF Railway, Kansas City	RMG	5	USA	40LT	42,67
2008	BNSF Railway, Memphis	RMG	8	USA	40LT	42,67/31,24
2007	BNSF Railway, Seattle	RMG	4	USA	40LT	37,64
2006	Roadways Container Logistics, Birmingham	RMG	2	UK	40t	28
2004	DOW Chemicals	RMG	1	France	41t	28
2004	De Ce Te, Duisburg	RMG	1	Germany	40t	37
2004	Sunny Point	RMG	1	USA	48LT	14,33
2003	Novatrans, Noisy-le-Sec	RMG	1	France	42t	25,49
2003	BILK Kombiterminal, Budapest	RMG	2	Hungary	42t	34
2001	TDG, Grangemouth	RMG	1	Scotland, UK	45t	25
2000	Uniport, Rotterdam	RMG	1	Netherlands	45t	43
1998	Novatrans, Avignon	RMG	1	France	45t	24
1997	Novatrans, Noisy-le-Sec	RMG	1	France	45t	24
1997	Novatrans, Noisy-le-Sec	RMG	1	France	45t	19
1995	Novatrans, Lille	RMG	1	France	45t	24
1995	Ports and Railways Authority Haifa	RMG	4	Israel	35t	42,5
1995	Ports and Railways Authority Ashdod	RMG	3	Israel	35t	43
1995	Port of Mariupol	RMG	1	Ukraine	32t	25
1994	Port of Ilyichevsk	RMG	4	Ukraine	35t	43
1990	Industrial Plant Ltd. Dar Es Salam	RMG	2	Tanzania	35t	37
1990	Beira Corridor Authority Mozambique	RMG	1	Mozambique	40t	20
1989	Novatrans, Rungis	RMG	1	France	40t	28
1988	Novatrans, Perpignan	RMG	1	France	40t	24

1987	Danida Dar Es Salaam	RMG	1	Tanzania	35.6t	20
1985	Mashinoimport	RMG	1	Russia	30.5t	20
1985	Mashinoimport	RMG	1	Russia	30.5t	20
1985	Mashinoimport	RMG	1	Russia	30.5t	37
1985	Mashinoimport	RMG	1	Russia	30.5t	37
1984	Novatrans, Bordeaux	RMG	1	France	40t	24
1984	Novatrans, Avignon	RMG	1	France	40t	24
1984	Novatrans, Marseille	RMG	1	France	40t	24
1984	Novatrans, Valenton	RMG	2	France	40t	24
1983	Mashinoimport	RMG	2	Russia	30.5t	63
1983	Novatrans, Toulouse	RMG	1	France	40t	24,75
1982	Mashinoimport	RMG	4	Russia	30.5t	52,8
1980	Mashinoimport	RMG	2	Russia	30.5t	25
1980	Mashinoimport	RMG	2	Russia	30.5t	15,3
1979	Finnish State Railways, Helsinki	RMG	1	Finland	50t	23
1977	Finnish State Railways, Oulu	RMG	1	Finland	50t	23
1975	Finnish State Railways, Tornio	RMG	1	Finland	50t	23
1973	Rauma Repola, Rauma	RMG	5	Finland	30t	16,7
1972	Mashinoimport	RMG	2	Russia	40t	25,3
1972	British Railways	RMG	1	UK	30t	23
Total			111			